

Property, real estate and infrastructure (Birmingham)

Future/Pre-Planning
Proposed
Approved
Site Preparation
Under Construction
Your Place Your Space

Residential
Office
Industrial
Mixed-Use
All Categories
Your Place Your Space

Midland Metro Tram
Your Place Your Space

HS2/Curzon Street Station
Your Place Your Space

Modern Architecture
Your Place Your Space

Public Squares
Your Place Your Space

Canals & Waterways
Your Place Your Space

Historic Buildings
Your Place Your Space

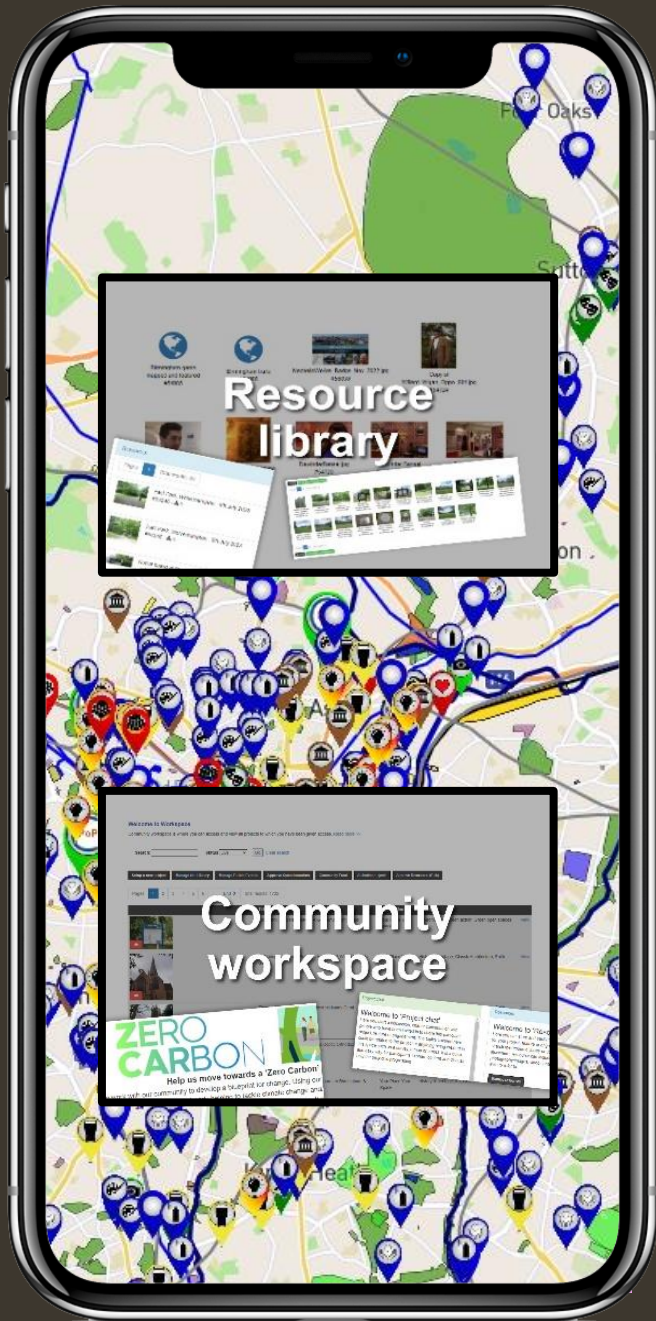
An aerial photograph of a city skyline across a large body of water. The skyline features various high-rise buildings, some with cranes, and a mix of residential and commercial structures. The foreground shows a grassy area with some trees. The text is overlaid in white, bold, sans-serif font.

It's your build

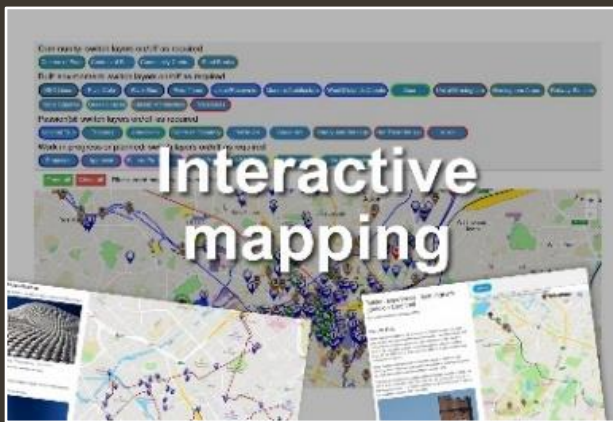
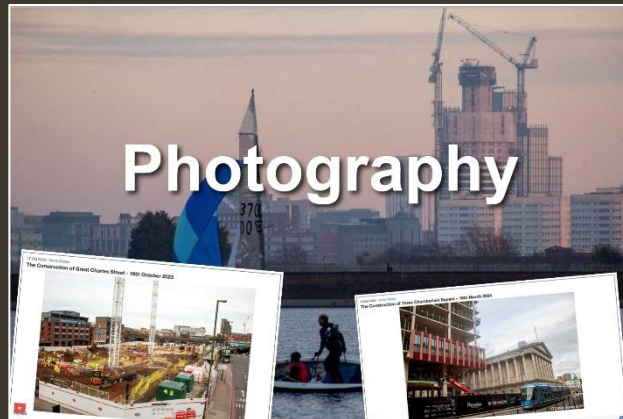
(from Your Place Your Space)

The most popular digital platform for
real estate investors and placemakers

It's your build is powered by **Community Passport**®



Community Passport is where makers, shapers and promoters of place create digital content that is shared and published for social value and economic impact.





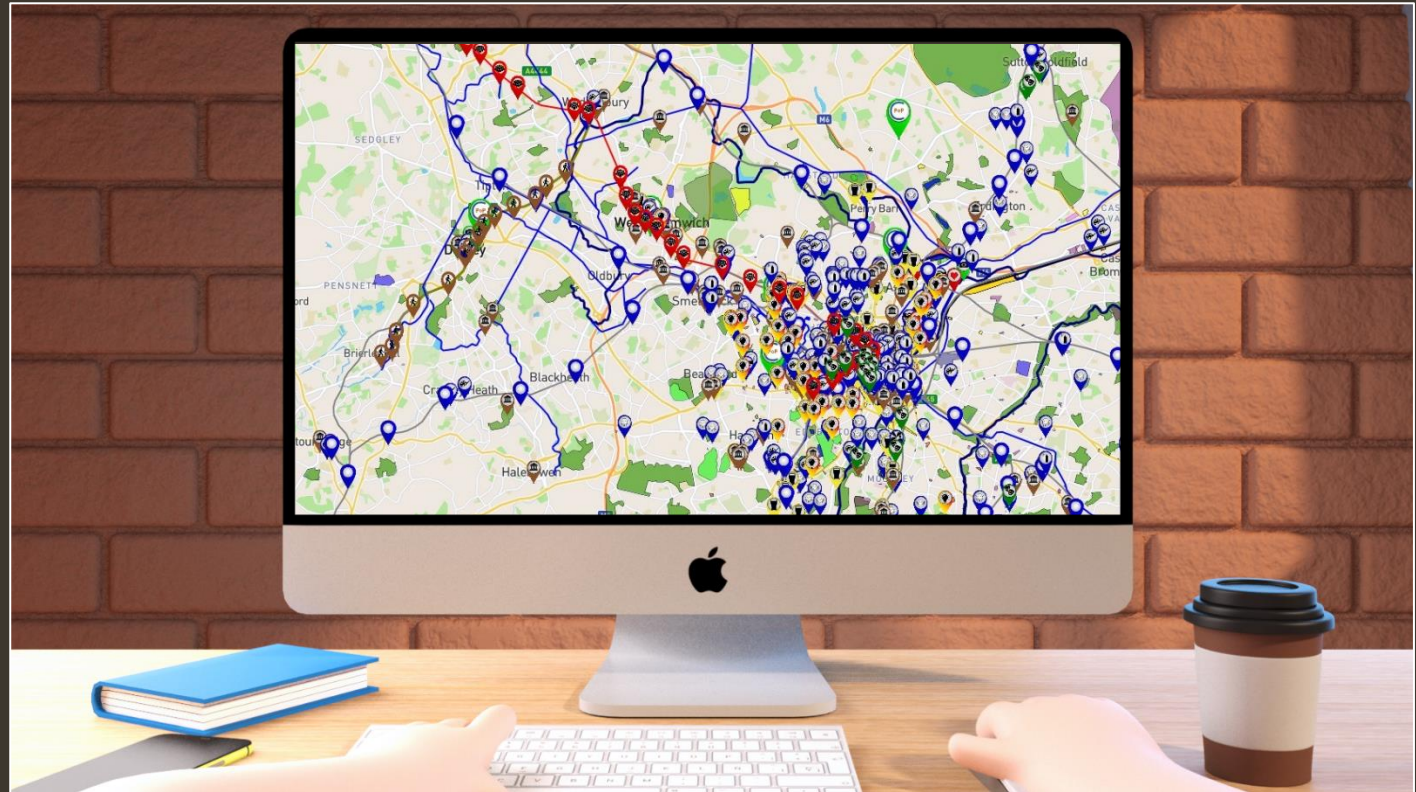
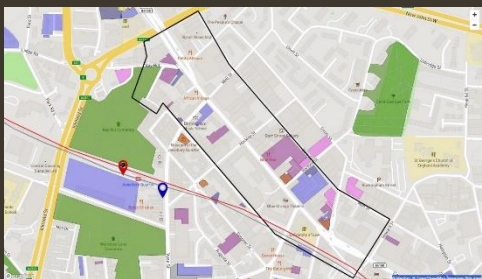
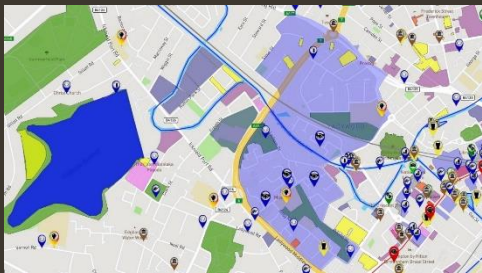
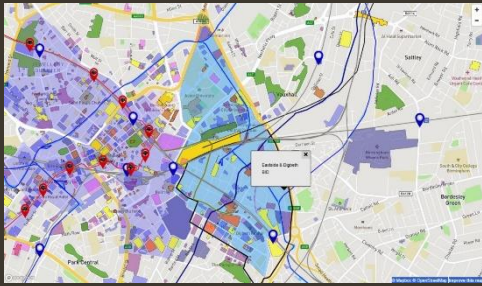
Community Passport is how investors in place can meet their social value commitments by engaging and involving community, helping to advance digital skills and helping people with their mental health challenges.



All of Birmingham's infrastructure is mapped and showcased



on maps already viewed
over 2.5 million times



Every development is searchable



Boundary(ies): switch layers on/off as required
 Districts/Bid Areas Birmingham WARDS

Development Areas: switch layers on/off as required
 Digbeth Great Hampton St Paradise East Birmingham

Built environment: switch layers on/off as required
 River Cole River Rea River Tame Complete (2015+) Modern Architecture Lakes/Reservoirs West Midlands Canals Green Spaces Birmingham Airport Public Squares Classic Architecture

Transport: switch layers on/off as required
 Railway Stations Tram Stops West Midlands Rail Tram Lines

Subscription Layers: switch layers on/off as required
 RealEstate Potential

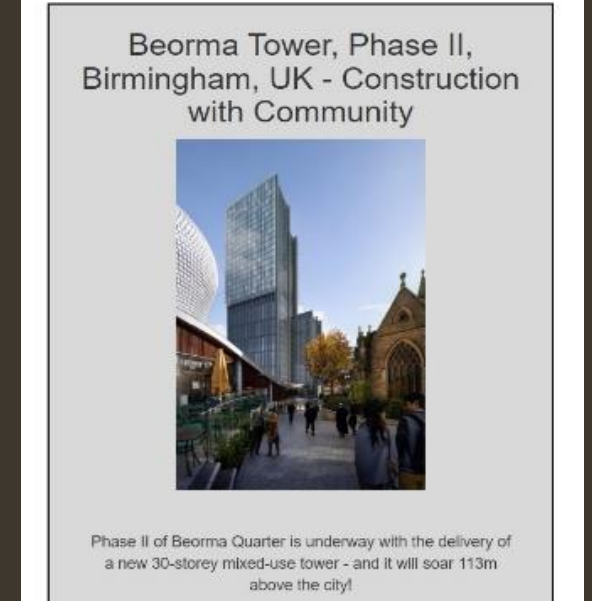
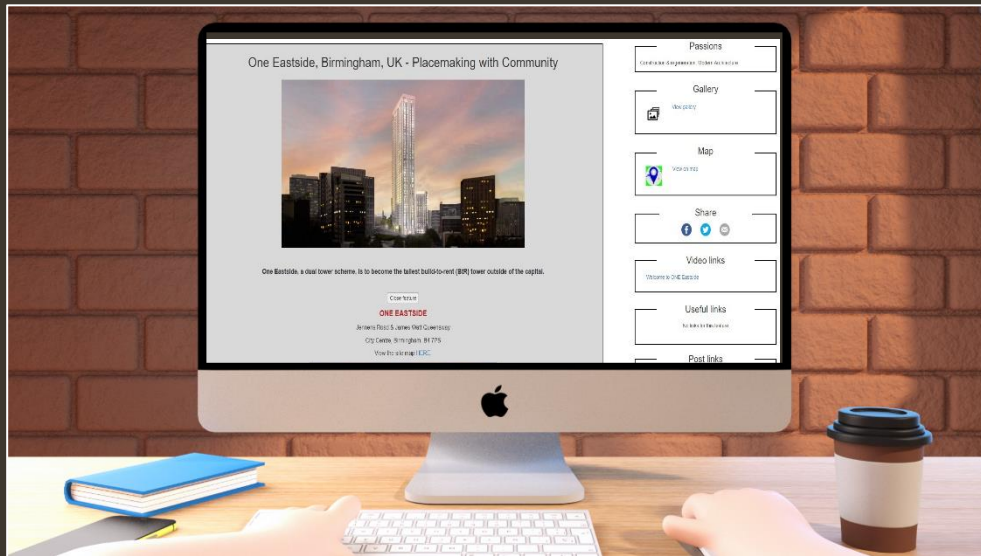
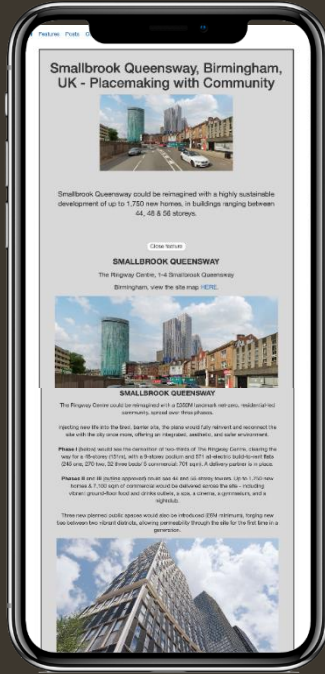
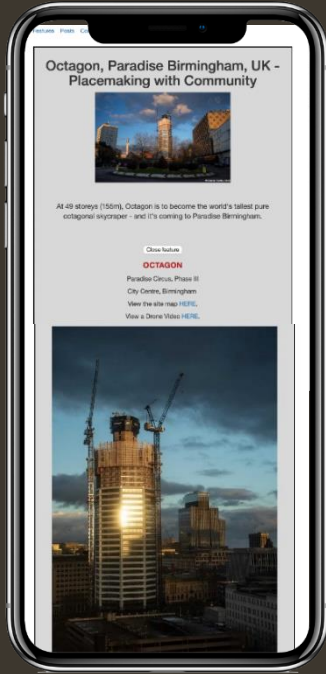
Work in progress or planned: switch layers on/off as required
 Masterplans HS2 Lines Proposed Approved Tram Progress Future/ Pre-Planning Site Prep Proposed Tram Stop

Filter visible map items results by name

- Library Tram Stop (Tram Stops)
- Town Hall Tram Stop (Tram Stops)
- The Library of Birmingham. (Modern Architecture)
- Two Chamberlain Square. (Modern Architecture)
- One Chamberlain Square. (Modern Architecture)
- Alpha Tower. (Modern Architecture)
- One Centenary Square. (Modern Architecture)
- Symphony Hall. (Modern Architecture)
- The International Convention Centre. (Modern Architecture)
- The Rep Theatre. (Modern Architecture)
- TRAM: Westside Metro Extension - Phase 1, Grand Central to Centenary Square (Tram Lines)
- 49ft (155m) RESI: Octagon - Paradise Birmingham (Under Construction)
- RESI: Lockside Wharf - 5 Scotland Street (Under Construction)
- REFURB: Council House - BMAG, Extension & Council House (Under Construction)
- 10ft OFFICES/ RETAIL: Three Chamberlain Square -

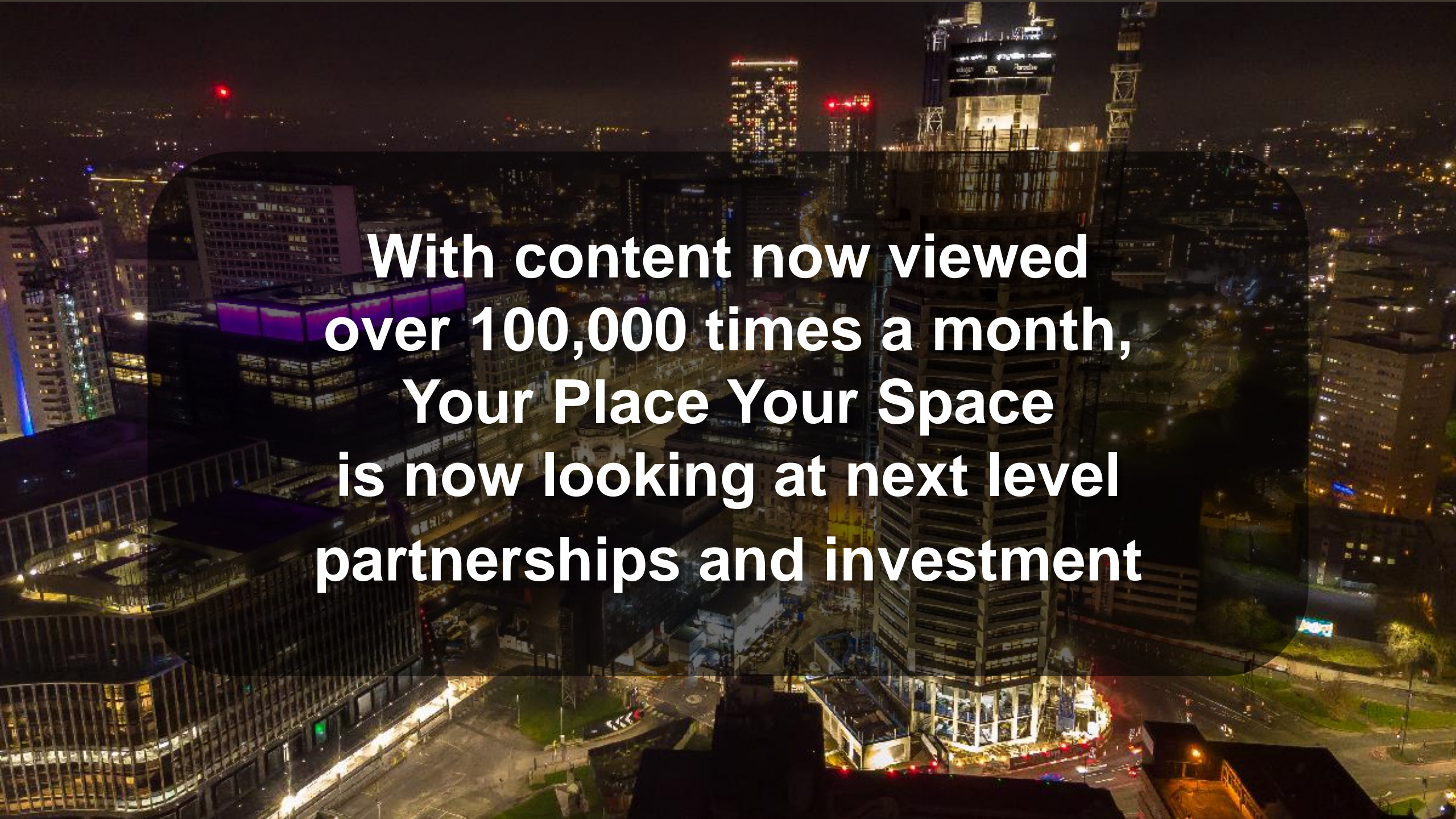


and featured





**Going forward
with community
within community
for community**

An aerial night view of a city skyline, featuring several illuminated skyscrapers and buildings. A semi-transparent dark circle is overlaid on the center of the image, containing white text. The text reads: "With content now viewed over 100,000 times a month, Your Place Your Space is now looking at next level partnerships and investment".

**With content now viewed
over 100,000 times a month,
Your Place Your Space
is now looking at next level
partnerships and investment**




**With partners, entrepreneurs
and investors we will in 2024**

launch a full marketing campaign

**develop more on-the-go mobile
applications for use in real estate**

expand our regional coverage



**By empowering even more people
to be engaged and involved in
shaping and promoting places ...**


together we will

**...deliver even greater
social and economic value.**

An aerial photograph of a park area. In the foreground, there is a large, circular, paved area, possibly a playground or a sports court, surrounded by green grass and trees. In the middle ground, there is a dense line of green trees. In the background, a city skyline is visible across a body of water, with several tall buildings and a bridge. The sky is a deep blue, suggesting dusk or dawn.

We will continue to deliver
quality placemaking
content

with even greater reach and impact

A nighttime aerial view of a city skyline with various buildings and lights. The text is overlaid in the center of the image.

Here's just a small
sample of content
from our extensive library of
features, drone footage,
videos, photography and maps.

An aerial night-time photograph of a city construction site. The central focus is a tall, rectangular building under construction, with its top section covered in blue protective sheeting. Several tower cranes with red lights are positioned around the building. The surrounding urban area is illuminated by streetlights, and a large, striped red and yellow tent is visible in the lower-left corner. The text "Take our video here of drone footage" is overlaid in white, underlined font across the center of the image.

Take our video here of
drone footage


A detailed street map of the Digbeth area in Birmingham, UK. The map shows a grid of streets, including Union St, Moor Street, Pickford St, River St, Fazeley St, Glover St, Keeley St, Dart St, Coventry Rd, and Small Heath Hwy. Landmarks such as the Britannia Hotel, Bullring, and various parks are visible. A large, semi-transparent grey rectangle is centered over the map, containing the word "Digbeth" in a large, white, sans-serif font. A blue location pin is placed on the map near the intersection of Moor Street and the A45 road. Other pins in red and blue are visible in the upper left corner. The map also shows various colored areas representing different types of land use or buildings.

Digbeth

You are in: Featuring

Features Posts Community Maps/Traffic About us

MasterChef Studios, Digbeth Loc. Studios - Media Cluster

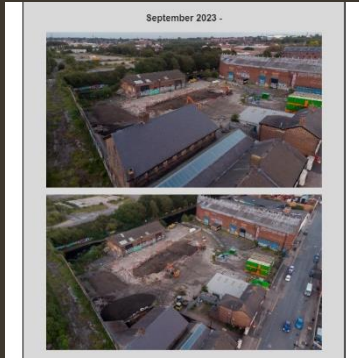


The BBC's flagship television show, MasterChef, will move to the Grade II* listed Banana Warehouse in 2024, the first time the show will be made outside London in more than 20 years.

[Close feature](#)


BBC MASTERCHEF

Banana Warehouse, Rear of 122 Fazley Street
Warwick Bar, Digbeth, Birmingham, B5 5RS
[View the site map HERE.](#)



MASTERCHEF STUDIOS, DIGBETH LOC (Digbeth, Birmingham) A Your Place Your Space featured development

Content is regularly updated
Feature can be viewed via many links




PROJECT TEAM

Developer: Digbeth Loc Ltd
Development Manager: Stanhope PLC
Asset Manager: Steven Knight
Architects: BG Projects, Robert Myers
Masterplan Architects: Allies and Morrison
Project Manager: Cadence Projects
Quantity Surveyor: Core Five LLP
Occupier: Shine TV MasterChef
Consultants: Ramboll
Contractor: BAM Construction
Planning Application Number(s): 2022/07929/PA, 2022/07931/PA
Targeted Completion: August 2024




Link to the Feature
MEDIA: MasterChef Studios - BBC, Banana Warehouse, Digbeth Loc

DECEMBER 2023 IMAGE



USE MasterChef will move to the 1840-built, Grade II* listed Banana Warehouse in Summer 2024

MASTERCHEF STUDIOS

MasterChef will move to the 1840-built, Grade II* listed Banana Warehouse in Summer 2024.

The show will be made at the first building of the new Digbeth Loc studios, as part of a six-year deal.

Spilloff shows including MasterChef: The Professionals, Celebrity MasterChef, and 'hourly MasterChef' for BBC Three, as well as feature editions, will be made in Digbeth.

Dating back to 1940, the canal-side building is now being refurbished and a modern new extension built to deliver a multitude of uses including pre-production, filming, and post production spaces.

There will also be a main stage, a contestants' room, critics' dining offices, and support spaces, e.g. prep kitchen & meeting rooms.

Post links



Application in for MasterChef's Move into Birmingham
25 Oct 2022 - Stephen Giles

[View all posts](#)


ReYourBuild - Birmingham @BuildWotAc: 180 12 Digbeth Loc Studios and new home of BBC MasterChef right here in Birmingham. Pics courtesy Alan Webb. See its your Build feature here at: reyourbuild.com/kms/dmart.aspx See site map here: reyourbuild.com/KMS/dmart.aspx All your Birmingham developments at reyourbuild.com



You are in: Featuring

Features Posts Community Maps/Tours About us

Beorma Tower, Phase II, Birmingham, UK - Construction with Community



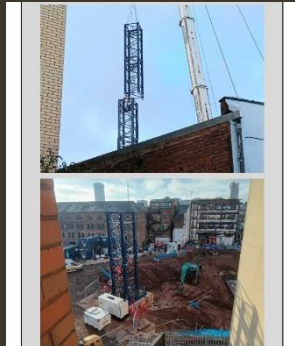
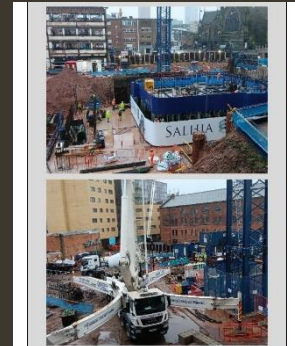
Phase II of Beorma Quarter is underway with the delivery of a new 30-storey mixed-use tower - and it will soar 113m above the city!

The tower will introduce 224 all electric homes, accommodating 60 one, 42 two & 19 three bedroom flats, 24 & 6 penthouses, 30 75sqm, benefiting from two fire-compliant stairwells and completed by 152K sq ft of construction.

With the basement providing an electric heating to the homes, the tower - designed with an 'in-glass' black granite base with protected aluminium cladding to the podium - a high-performance curtain walling - will deliver 10 floors of offices, punctuated by a glass-roofed atrium with 17 floors of homes overlooking.

Residents facilities include a communal area, a 20th floor gymnasium, and 20th floor penthouses with watergarden services.

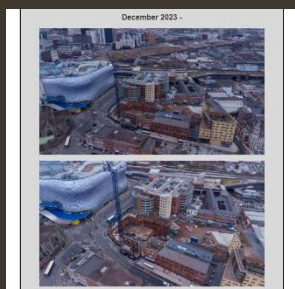
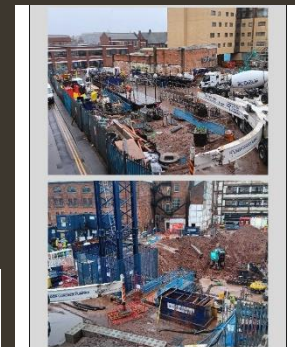
115K-137 & the 115th, 116th & 117th floors of 115-117 City Square high storey will be integrated into the design.

BEORMA TOWER, PHASE II

Land at Park Street, Allison Street and Well Lane
Digbeth, Birmingham, B5 6JR

View the site map [HERE](#).

PROJECT TEAM:

Developer: Saha

Architects, Designers: Goodway Malvern, LSO

Project Manager, Quantity Surveyor, Health & Safety: Goodies

Principal Designer: MVA Consulting, Andrew Goodard Associates

Civil & Structural Engineer: Geotechnical Engineer: Walsh

MSP: Salamone

Facade: McMillan Facades (URL), ASD Ltd (URL), Winch

Principal Contractor: Midgard (URL, Group)

Planning Consultant: Altair Gills Associates

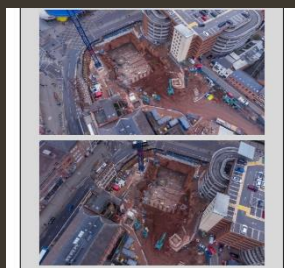
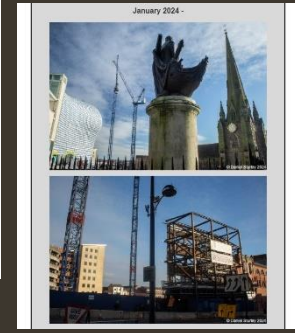
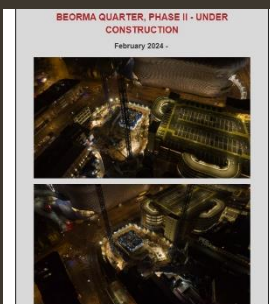
Planning Application Number: 2020/10276/9A

Targeted Completion: 2025



BEORMA TOWER, PHASE II

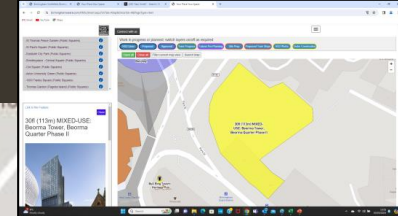
Phase II of Beorma Quarter is underway with the delivery of a 30-storey mixed-use tower (113m).



BEORMA TOWER (Digbeth, Birmingham)

A Your Place Your Space featured development

Content is regularly updated
Feature can be viewed via many links



Link to the Feature

30fl (113m) MIXED-USE: Beorma Tower, Beorma Quarter Phase II



MIXED-USE: Phase II of Beorma Quarter



Connect with us

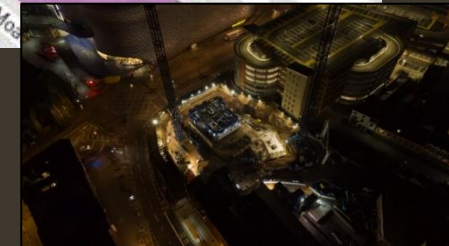
Q Search

Post links

Beorma Quarter CPO Around the Corner
29 Oct 2021 - Stephen Giles



[View all posts](#)





TEA FACTORY (Digbeth, Birmingham)

A Your Place Your Space featured development

Content is regularly updated
Feature can be viewed via many links

You are in: Featuring
 Features Posts Community Maps/Traffic About us


The Tea Factory - BBC Birmingham & The Wider Site



BBC Birmingham is to relocate from its Mailbox home into a custom-built 84,001K SF broadcast centre at Typhoo Factory by 2026.


Close feature

BBC BIRMINGHAM
 Typhoo Tea Factory Building
 Aka 'The Tea Factory'
 Bordesley Street, Birmingham, B5
 Click [HERE](#) for the map of the site.



PROJECT TEAM

Partners: Slobord, Benacre 2022 LLP (The Gooch Estate)
 Architects: Howells, BDP, Grant Associates
 Cost Consultant: MGC
 Project Manager: Arcadis
 Principal Designer: Anstey Home
 Structural Engineer, Transport: BWS
 Services Engineer: ESC
 Contractor: BAM Construction
 Fire Consultant: Jensen Hughes
 Agent(s): Savills & Watkis Real Estate
 Planning Consultant: Turley
 Planning Application Number: 2022/08628/PA



THE TEA FACTORY

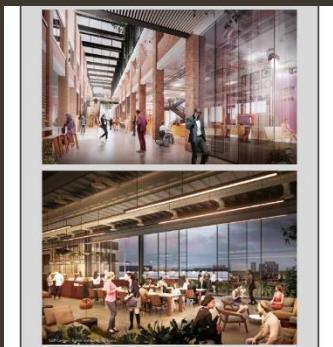
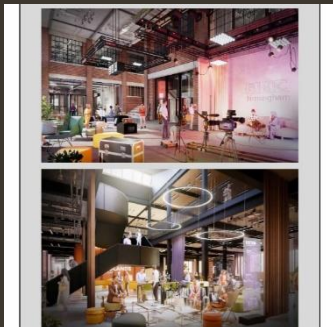
The Tea Factory, a 1920s-built industrial building, is being transformed into an 84K SF state-of-the-art broadcast centre – and it'll be the BBC's greenest building (EPIC A, BREXAM Outstanding).

The Tea Factory will be home to BBC Birmingham from 2026/27, marking the beginning of a new era for production and the creative industries in the city.


Two-thirds of the building's structural frame will be salvaged and adapted to house several editorial teams, including The Archers, BBC Newsbeat, BBC Asian Network, BBC Radio VXM, and Midlands Today.


With rooftop terraces, there will also be a new public realm and square allowing for a casual-use quarter, with further potential for bars, cafes & restaurants as the masterplan evolves.


The masterplan of the wider site aims to deliver up to 800,000K SF of new residential, office, and hospitality space, over the next decade.



Post links

 Approval for the BBC's Move into Digbeth
 16 Mar 2023 - Stephen Giles

 Plans in for BBC Birmingham's move to the Typhoo Building
 24 Nov 2022 - Stephen Giles

 Typhoo Wharf - BBC Birmingham & The Wider Site
 07 Sep 2022 - Stephen Giles

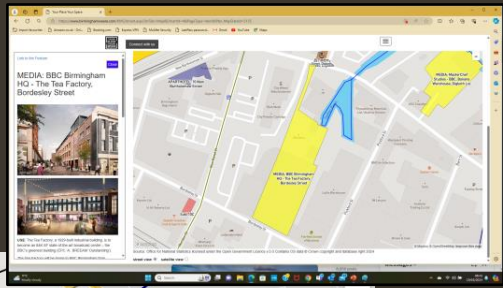
[View all posts](#)



Approval for the BBC's Move Into Digbeth



Proposals for the BBC's new home at Typhoo Wharf in Digbeth, which will house several of the organization's editorial teams, has been unanimously approved. The building will now become an 84K SF, custom-built broadcast centre.

You are in: Featuring

Features Posts Community Maps/Trails About us

BOXPARK: BIRMINGHAM - Food Hub, Retail, Leisure Destination, Digbeth



BOXPARK: BIRMINGHAM will transform four 12m historic railway arches, into a 17K SF food hall and events destination, creating up to 200 new jobs.

Close feature

BOXPARK: BIRMINGHAM

Railway Arches (Nos 23 - 25) Between Floodgate Street & Milk Street

Digbeth, Birmingham, B5

View the Boxpark site [HERE](#)

View the Boxpark site [HERE](#)



PROJECT TEAM OVERVIEW

Client: **BOXPARK**

Architects: **BDP**

Planning Consultant, Agent: **Quoad**

Planning Application Number: **2024/01059/PA**





BOXPARK: BIRMINGHAM

BOXPARK Birmingham will transform four 12m historic railway arches, into a buzzing 17K SF food hall and events destination, creating up to 200 new jobs.

Allowing independent traders to trade, BOXPARK will feature a large, covered structure with around 10 kitchen units and four external bars set across two floors.

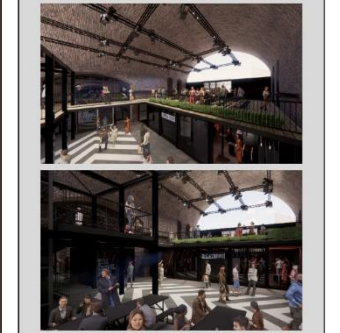
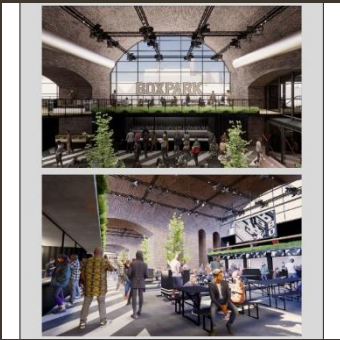
In addition, there will be external space offering events and alfresco dining, with the site expected to see over one million people each year.

Boxpark Birmingham, images from BDP Architects.

WATCH THIS SPACE FOR MORE!

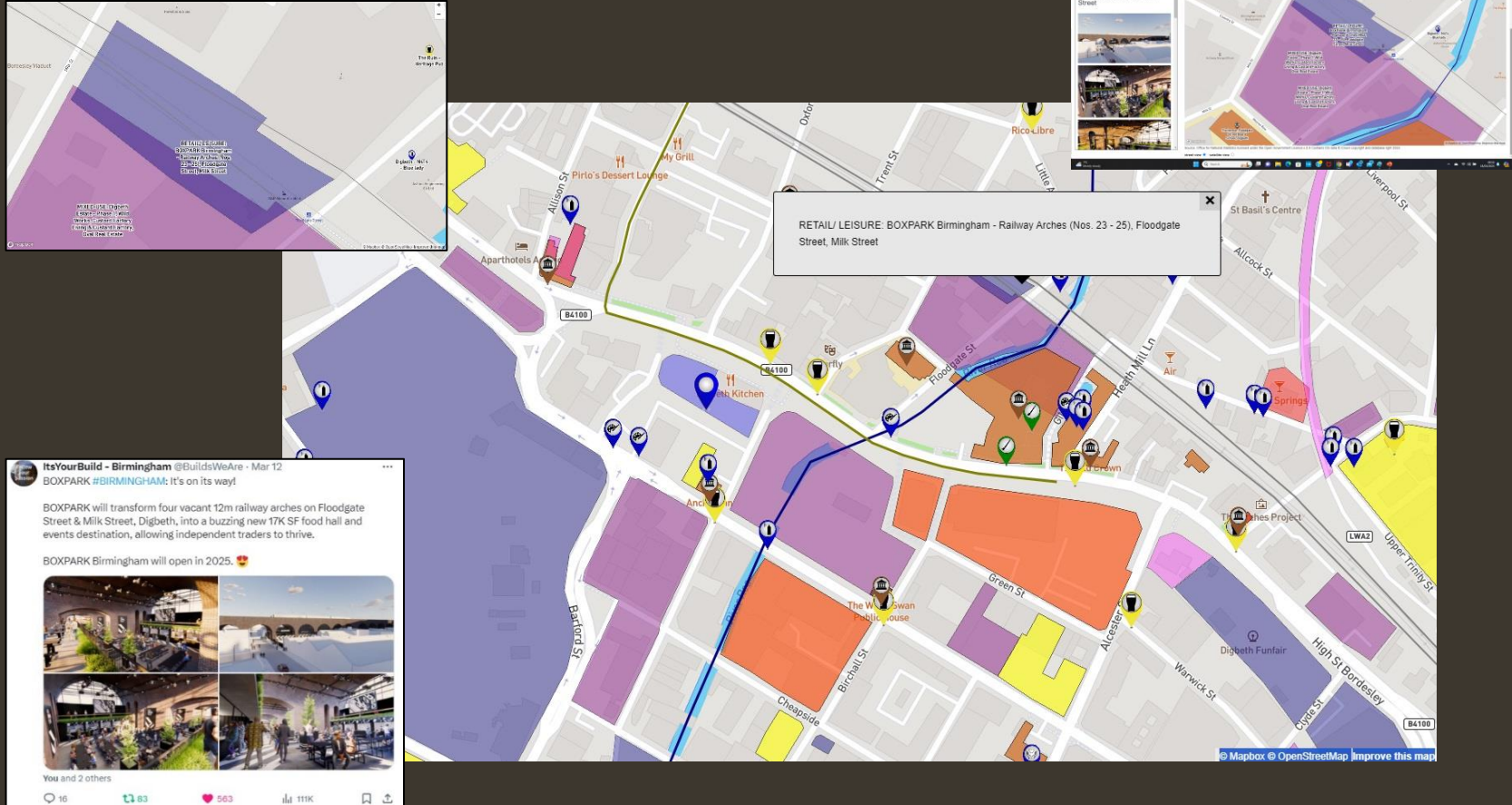
Close feature



BOXPARK (Digbeth, Birmingham)

A Your Place Your Space featured development

Content is regularly updated
Feature can be viewed via many links



RETAIL/ LEISURE: BOXPARK Birmingham - Railway Arches (Nos. 23 - 25), Floodgate Street, Milk Street

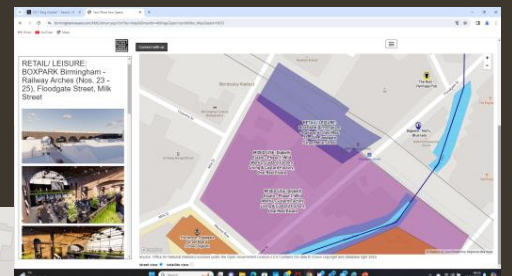
ItsYourBuild - Birmingham @BuildsWeAre - Mar 12
 BXPARK #BIRMINGHAM: It's on its way!

BOXPARK will transform four vacant 12m railway arches on Floodgate Street & Milk Street, Digbeth, into a buzzing new 17K SF food hall and events destination, allowing independent traders to thrive.

BOXPARK Birmingham will open in 2025. 🇬🇧

You and 2 others

16 83 563 111K






City Centre (incl. Paradise)

Home Features Community Map/Track About Us

Octagon, Paradise Birmingham, UK - Placemaking with Community



At 49 storeys (156m), Octagon is to become the world's tallest pure octagonal skyscraper - and it's coming to Paradise Birmingham.


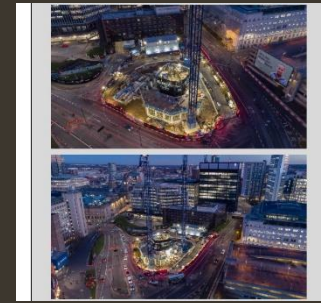
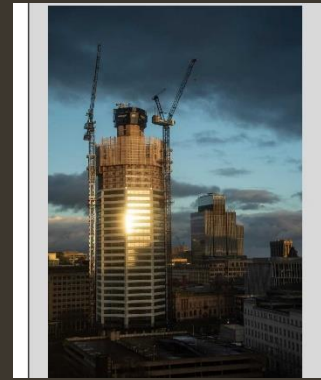
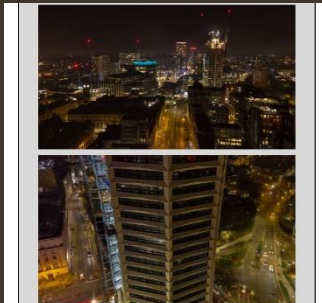
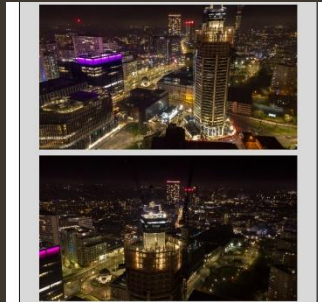
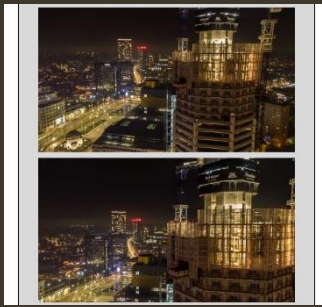
[View the site map HERE.](#)
[View the site map HERE.](#)
[View a Drone Video HERE.](#)

OCTAGON

Paradise Circus, Phase II
 City Centre, Birmingham

PROJECT TEAM

Developer: City Developments Limited (CDL)
 Development Manager: MFC
 Architects: Grimshaw Architects, Grant Associates
 Principal Designer: Steven Barnsley Associates
 Quantity Surveyor: Quantom
 Structural: MEP/ Civil/ Acoustic/ Fire Engineer: BCM, Arup, Design MIP
 Transport: Stantec
 Principal Contractor: Midgard (JRL Group)
 Concrete Frame: J Reddington (JRL Group)
 Cranes: London Tower Cranes (JRL Group)
 Facade Access/ Design & Installation: Meinhardt; McLallen (JRL Group)
 Internal Walls & Ceilings: JRL Drying (JRL Group)
 Demolition Contractor: JRL Demolition (JRL Group)
 Planning Consultant: Turey
 Enquiries: Knight Frank
 Planning Application Number: 2020/08215/PA
 Targeted Completion: June 2025



OCTAGON (Paradise, Birmingham)

A Your Place Your Space featured development

Content is regularly updated
 Feature can be viewed via many links


OCTAGON PROGRESS

March 2024


Link to the Feature

49ft (156m) RESI: Octagon - Paradise Birmingham



Post links

- The Construction of the Octagon - Update - February 2021
- The Construction of the Octagon - Update - December 2021
- Design of Paradise Birmingham - February to August 2021 Update
- The Construction of the Octagon of Paradise Birmingham - February 2021
- The Construction of the Octagon of Paradise - December 2021 Update

35ft STUDENT: Cambrian Wharf - Brindley Drive, Summer Row

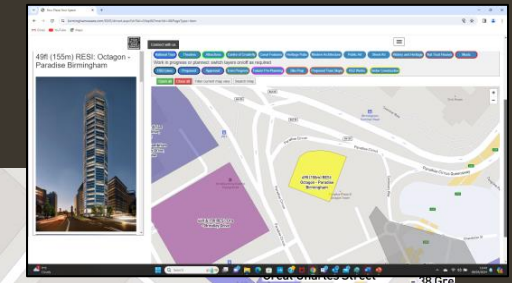
46ft & 15ft RESI: Ora - Brindley Drive

11ft OFFICES: Spaces - Civic House, 156 Great Charles Street

115ft (35m) RESI: Octagon - Paradise Birmingham

Two Cen Way - Pa mingham

© Canvel Sturley 2024



115ft (35m) RESI: Octagon - Paradise Birmingham

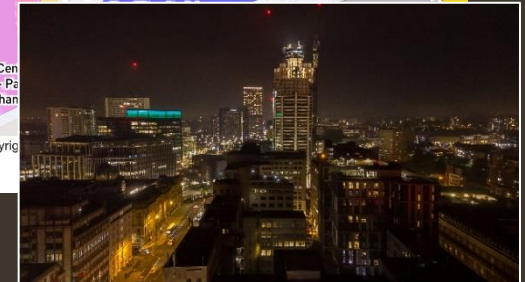
Great

The dizzying heights of Octagon (49ft, 156m), the world's tallest and purest octagonal skyscraper, right here in Birmingham.

Already making its presence known for miles around, the core is now up to #37 - and there's still some way to go! 📈

You and 4 others


2:45 PM · Feb 24, 2024 · 8,237 Views





Home Feature Posts Community Maps/Tools About

Three Chamberlain Square, Birmingham, UK - Construction with Community




Three Chamberlain Square is a 'game-changing' 10-storey office building that raises the bar for new commercial office buildings in the country.

Class feature

THREE CHAMBERLAIN SQUARE
Paradise Birmingham, B3 3HJ
View the site map [HERE](#).

PROJECT TEAM

- Client: Federated Hermes
- Development Manager: MEPC
- Architect(s): FCBS, Grant Associates
- Project Manager, Principal Designer, Cost: Faith+Gould
- Civil & Structural Engineer, Services, Acoustics: Cundall
- Monitoring/Buyer: Adams Consulting Group
- Transport Consultant: Statistik
- BREEAM Assessor: GWP
- Facade & Materials Design: FMDG
- Ecology: EDI
- M&E: King & Moffatt
- FACADE: Inaxis
- Enabling, Groundworks, RC Frame: MFB Structures
- Principal Contractor: Sir Robert McAlpine
- Planning Consultant: Turley
- Access and Maintenance: Inaxis/EDI
- Planning Application Number: 2021/08105/04

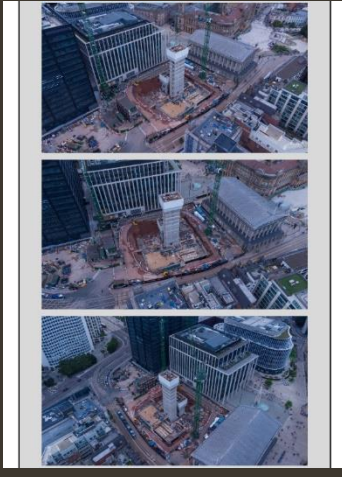
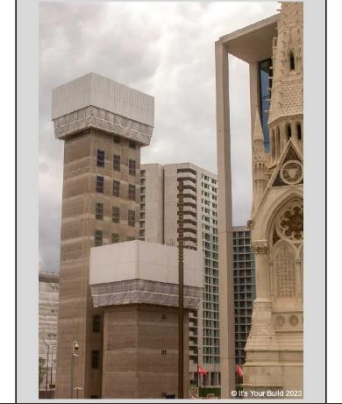
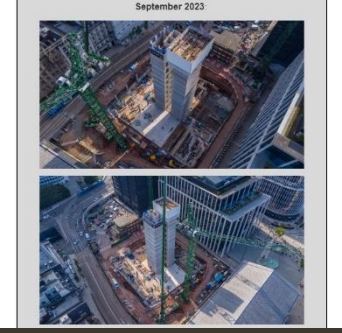


CONSTRUCTION PROGRESS

February 2024:



Photography by Daniel Surley



Connect with us

Post links

- The Construction of Three Chamberlain Square - February 2024 Update
18 Feb 2024 - Sarah Surley
- The Construction of Three Chamberlain Square - August 2023 Update
08 Aug 2023 - Sarah Surley
- 'Game-Changing' Three Chamberlain Square Approved
18 Jul 2023 - Sarah Surley
- Plans unveiled for second phase of £750m Paradise development
27 Sep 2021 - Steven Giles

View all posts

ItsYourBuild - Birmingham @buildsWAAre - Feb 5

Click: <https://itsyourbuild.com/post/2352>

Three Chamberlain Square has been going up fast for the past few months, the wider over-hanging main rise of the structure is now clearly visible.

This construction photo gallery is a selection from the nearly 400 photos in the feature project.



View and 2 others


THREE CHAMBERLAIN SQUARE (Paradise, Birmingham) A Your Place Your Space featured development

Content is regularly updated
Feature can be viewed via many links

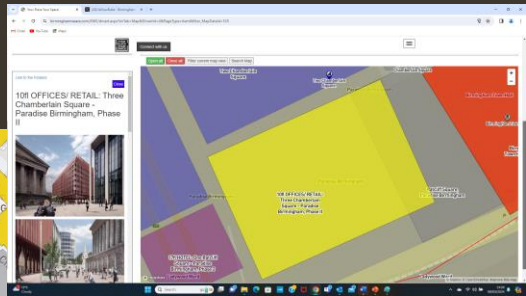


Link to the Feature

10fl OFFICES/ RETAIL: Three Chamberlain Square - Paradise Birmingham, Phase II



USE: Three Chamberlain Square is a 'game-changing' 10-storey office building that raises the bar for new commercial buildings in the country.




Architecture Gem!

10fl OFFICES/ RETAIL: Three Chamberlain Square - Paradise Birmingham, Phase II

RESI - Paradise View - 28 Paradise Street

© Crown copyright and database right 2024






You are in: Featuring

Features Posts Community Maps/Trails About Us

Great Charles Street, Birmingham, UK - Placemaking with Community



Great Charles Street is a dynamic new neighbourhood containing 722 rental homes with state-of-the-art amenities.

Close feature

GREAT CHARLES STREET
Birmingham, B3

View the site map [HERE](#)



PROJECT TEAM

Partners: Apache Capital, Harrison Street, NFJ Mutual
Development Management, Operator: Moda Living
Architects: Rysher Architecture, Weedon Architects, Obo Landscape, Amos and Amos
Funding: Procede Capital, Nomura
Project Manager: RPS Group
Quantity Surveyor: Arcadis
Civil & Structural Engineer: Carrys, WSP
MEP: Tate Consulting, HE Shim
Piling: Van Elle
Facade: INASUS, Thorp Precast
Contractor: John Sisk & Son, MJ Gallagher
Planning Consultant: Turley
Planning Application Number: 2020/02556/PA
Value: £302M
Targeted Completion: Q2/3 2026


GREAT CHARLES STREET

Great Charles Street is a dynamic new neighbourhood containing 722 rental homes, delivering a community to live, work, and play.

Three blocks of six, 16, and 39 storeys (126m) are being built, introducing one to three bedroom homes (six storeys) and an array of state-of-the-art amenities.

With street-level retail, food and drink, offices, and co-working space, Great Charles Street will be complemented by new areas of public realm, public and private gardens, open-air terraces, a concierge service, a cinema room, sky lounges, and a 24/7 gym and fitness centre.

Block A: 39 storeys: 366 homes, ground retail, level 19 amenity space
Block B: 16 storeys, 256 homes, ground retail & amenities, including a gym
Block C: 6-6 storeys, 120 homes, lower ground retail & a MCCA reception, and small car park




GREAT CHARLES STREET PROGRESS
February 2024



August 2023

June 2023

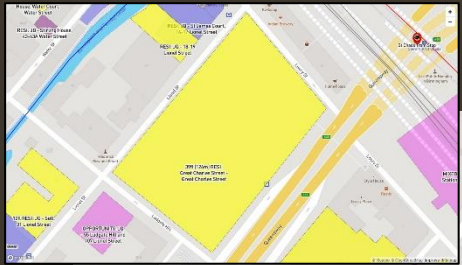
April 2023



GREAT CHARLES STREET (Birmingham)

A Your Place Your Space featured development

Content is regularly updated
 Feature can be viewed via many links



ItsYourBuild - Birmingham @BuildsWklyr · Feb 28


UPDATE | What a joy to see buildings rise out of the ground at Great Charles Street, a site undeveloped since WWII.

Set to become a dynamic 722-home neighbourhood to live, work, and play, a huge amount of activity is now taking place on site.

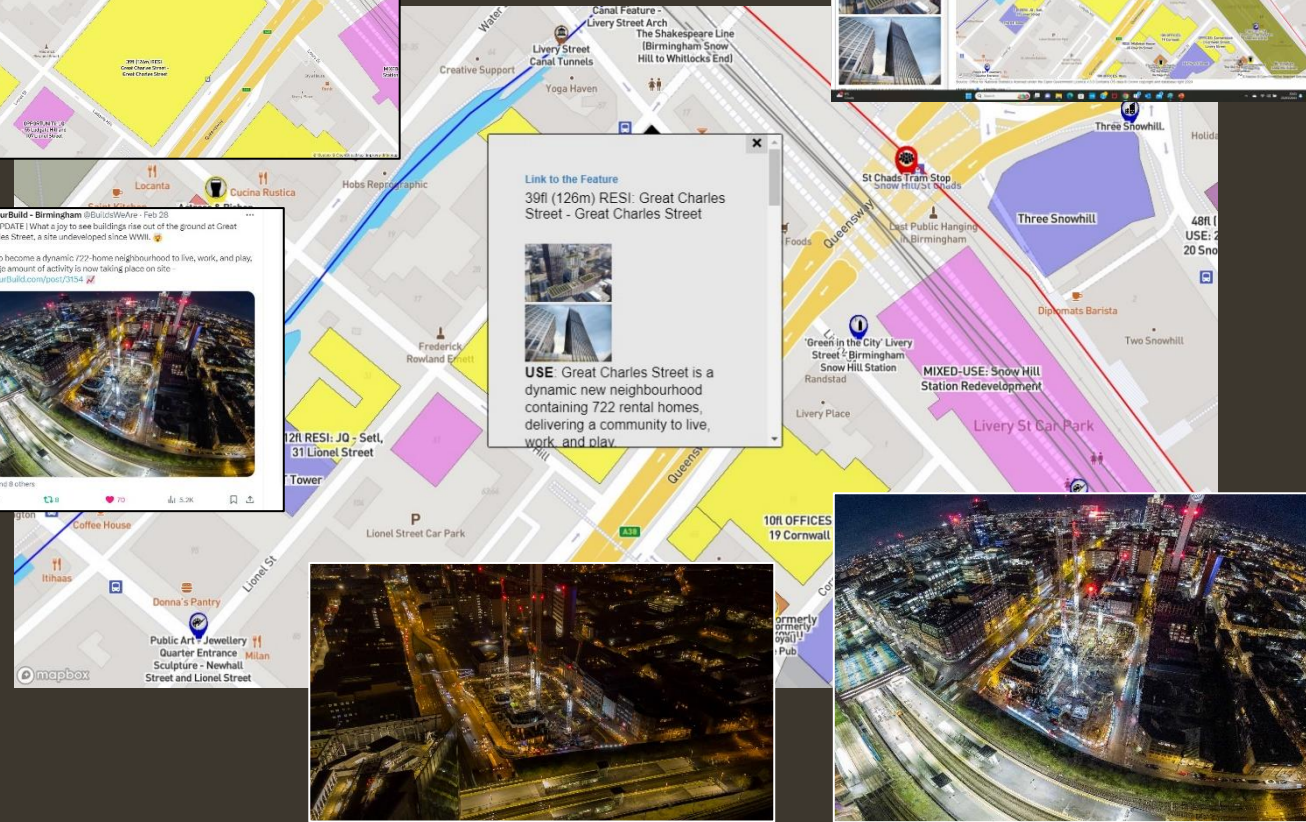
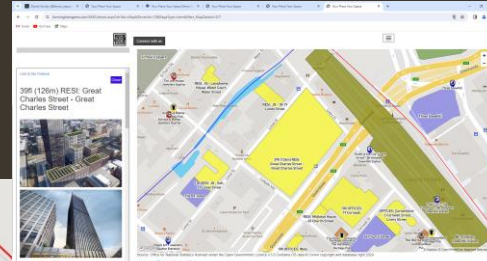


You and 8 others

Link to the Feature
 39fl (126m) RESI: Great Charles Street - Great Charles Street



USE Great Charles Street is a dynamic new neighbourhood containing 722 rental homes, delivering a community to live, work, and play.






A detailed street map of the Southside area in Birmingham, UK. The map features a grid of streets including Gas St, Holliday St, Edgbaston St, Hill St, Gough St, Upper Gough St, Blucher St, Ellis St, Thorp St, Marsh St, Granville St, Ridley St, Essex St, Bromsgrove St, Hurst St, Skinner Ln, Kent St, Gooch St, Lower Essex St, Wrentham St, and Sherklock St. Various landmarks and businesses are labeled, such as Nitenite Hotel, Easyhotel Birmingham, The Old Repertory Theatre, New Alexandra Theatre, Holiday Inn, Radisson Blu hotel, Peach Garden, Ibis, Staycity, Teppanyaki, Chongqing Noodles - 80's Canteen, Ulysses Greek Restaurant, Gaijin Sushi, Ibis Budget, Sun Yip Ltd Chinese Supermarkets, and Casablanca. A large, semi-transparent dark grey rectangle is centered over the map, containing the word "Southside" in a large, white, sans-serif font. The map also shows a canal on the left side and a large blue area on the right side, possibly a park or water feature. The bottom left corner has a "mapbox" logo, and the bottom right corner has a copyright notice: "© Mapbox © OpenStreetMap Improve this map".

Southside

You are in: Featuring

Features Posts Community Maps/Trails About us

Birmingham Smithfield, Birmingham, UK - Placemaking with Community




Birmingham Smithfield is a £1.9bn city quarter set to be crafted into a sustainable and buzzing residential, leisure and entertainment district.


Close feature


BIRMINGHAM SMITHFIELD


Land bound by Moat Lane, Bradford Street, Rea Street, Pershore Street and Edgbaston Street, Birmingham




Post links

- 

Introducing Smithfield (previously home to the Wholesale Market), Birmingham, UK
21 May 2019 - Your Place Your Space
- 

Revised plans lodged for £1.9bn Smithfield development
31 Jan 2024 - Stephen Giles
- 


BREAKING: Significant design changes to the £1.9bn Birmingham Smithfield development
24 Oct 2023 - Stephen Giles
- 

Plans for Birmingham Smithfield Are Now In
25 Jan 2023 - Stephen Giles


View all posts

PROJECT TEAM (OVERVIEW)

Partners: [Lendlease Smithfield LLP](#) (Lendlease, BCC)
 Masterplan Architects: [Prior + Partners](#)
 Project Manager: [Ridge LLP](#)
 Quantity Surveyor: [Aecom](#)
 Principal Advisor: [Turner & Townsend](#)
 Structural Engineer: [Arup](#)
 Civil Engineer, Transport: [WSP](#)
 Heritage: [Montagu Evans](#)
 Planning Consultant: [DP9](#)
 Planning Application Number: 2022/09643/PA



Revised plans lodged for £1.9bn Smithfield development



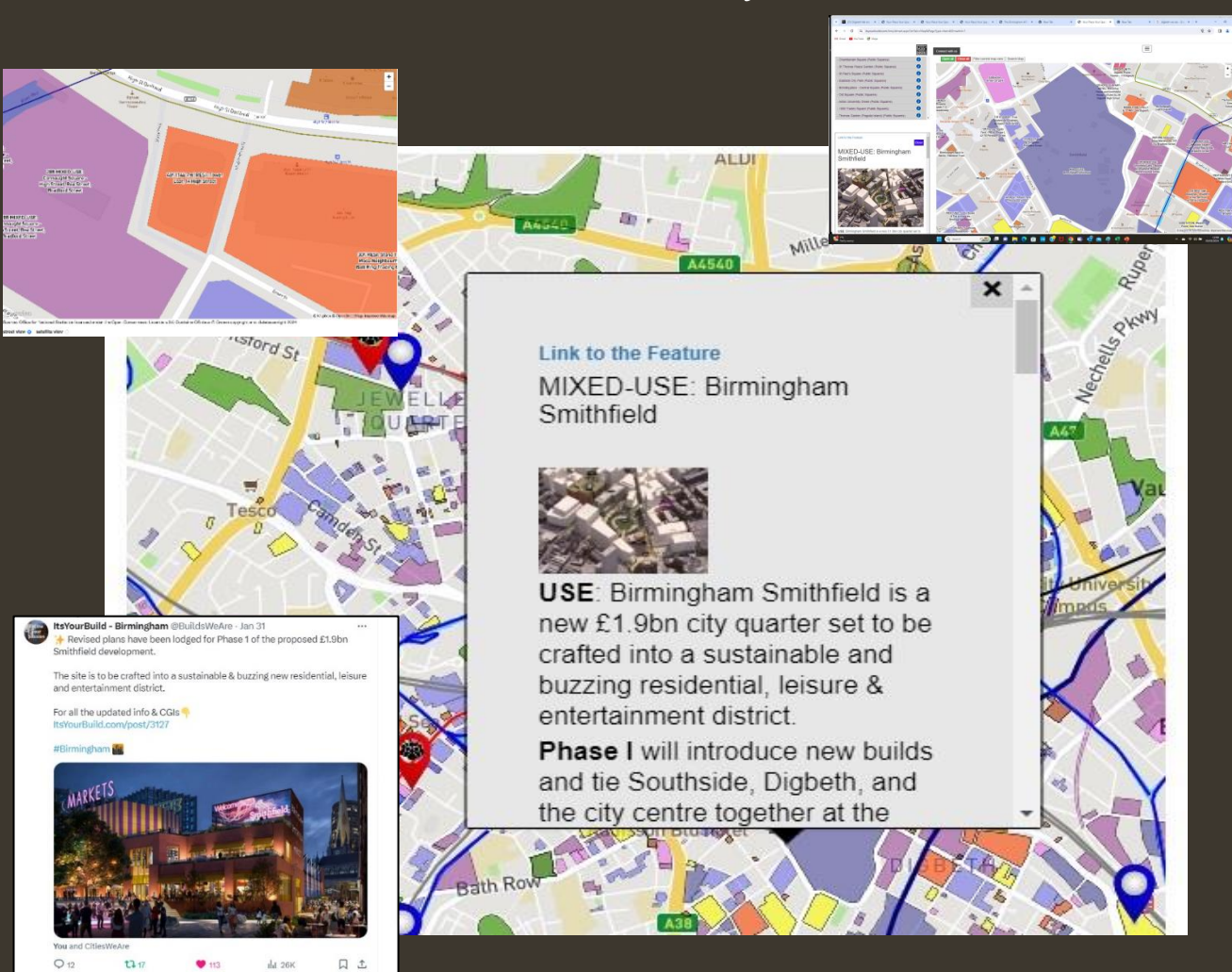
Amended plans for Birmingham's new £1.9bn Smithfield quarter have been submitted.

The site will be crafted into a sustainable and buzzing new residential, leisure and entertainment district.

SMITHFIELD (Southside, Birmingham)


A Your Place Your Space featured development

Content is regularly updated
 Feature can be viewed via many links



[Link to the Feature](#)

MIXED-USE: Birmingham Smithfield



USE: Birmingham Smithfield is a new £1.9bn city quarter set to be crafted into a sustainable and buzzing residential, leisure & entertainment district.

Phase I will introduce new builds and tie Southside, Digbeth, and the city centre together at the


ItsYourBuild - Birmingham @BuildsWeAre · Jan 31

Revised plans have been lodged for Phase 1 of the proposed £1.9bn Smithfield development.

The site is to be crafted into a sustainable & buzzing new residential, leisure and entertainment district.

For all the updated info & CGIs
[ItsYourBuild.com/post/3127](https://itsyourbuild.com/post/3127)

#Birmingham



You and CitiesWeAre

12 17 113 20K

Smallbrook Queensway, Birmingham, UK - Placemaking with Community



Smallbrook Queensway could be reimagined with a highly sustainable development of up to 1,760 new homes, in buildings ranging between 44, 48 & 56 storeys.

Close feature

SMALLBROOK QUEENSWAY

The Ringway Centre, 1-4 Smallbrook Queensway
Birmingham, view the site map [HERE](#).



PROJECT TEAM:
 Client: CEG on behalf of Doaba Investments II Ltd
 Architects: Conorphine+Wright, Fira
 Funding: Sensitive (IBA)
 Project Manager, Quantity Surveyor, Employer's Agent: MGAC
 Principal Designer: Project Four Safety
 Structural & Civil Engineer: Curllins
 M&E: CPW
 Demolition Contractor: Wing Group
 Phase 1 Building Contractor: TBC
 Facade: WinTech
 Transport: Slanick
 Fire Engineer: Kubitze Fire
 Wind Engineer: Architectural Aero
 Acoustic, Air Quality: Horne Ltd
 Right of Light: The Chantry Group
 Building Control: Quadrant
 Consultants: Mott MacDonald
 Planning Consultant: Turley
 Planning Application Number: 2022.08496.PA



DEMOLITION

The three phased development will see a historical building across and a pre-demolition audit before any demolition happens. This is to identify materials that could be reused on site or recycled, with a target of 85% of non-hazardous waste diverted from landfill. We'll then see demolition up to the link bridge.



Two buildings would essentially enclose the site including a 48 storey in Phase 1. The one next to it (SB22) will be empty, it is expected that a pocket park will become a short-to-long-term measure.



THE RINGWAY, SMALLBROOK QUEENSWAY (Southside, Birmingham) A Your Place Your Space featured development

Content is regularly updated Feature can be viewed via many links

SMALLBROOK QUEENSWAY

The Ringway Centre could be reimagined with a 250M landmark net-zero, residential-led community, spread over three phases.

Injecting new life into the breed, better site, the plans would fully reinvent and reconnect the site with the city once more, offering an integrated, aesthetic, and safer environment.

Phase 1 (below) would see the demolition of two-thirds of the Ringway Centre, clearing the way for a 48-storey (SB14), with a shadow podium and 371 all-electric build-to-own flats (245 one, 270 two, 32 three beds) commercial (701 sqm). A delivery park is in place.

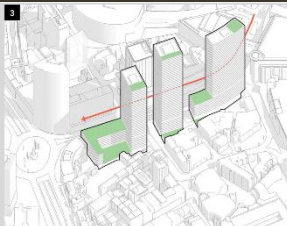
Phases 2 and 3 (outline approved) could see 44 and 56-storey towers. Up to 1,760 new homes & 7,100 sqm of commercial would be delivered across the site - including vibrant ground-floor food and drink outlets, a cinema, a cinema, a gymnasium, and a nightclub.

Three new planned public spaces would also be introduced (SRM minimum), forging new ties between two vibrant districts, allowing permeability through the site for the first time in a generation.



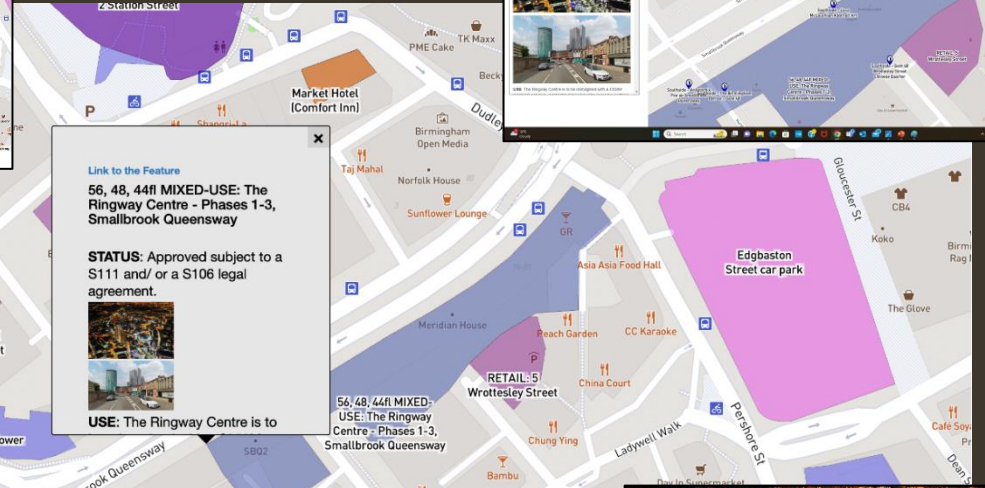
FUTURE PHASES:

A phasing plan for the final two builds - up to 44 & 56 - hasn't been announced. Both are in outline form & require a more detailed application (and further demo to SB20) in the next few years. They could go up consecutively - nothing has been confirmed.



Post links

- Birmingham councillors stick to decision to demolish 'brutalist' 'landmark' and replace with net-zero
07 Feb 2024 - Stephen Giles
 - Facade Charges at net zero Smallbrook Queensway
27 Mar 2023 - Stephen Giles
 - Three Builds of 44, 48 & 56-storeys Examined for Smallbrook Queensway
21 Nov 2022 - Stephen Giles
- [View all posts](#)



Link to the Feature
56, 48, 44ft MIXED-USE: The Ringway Centre - Phases 1-3, Smallbrook Queensway

STATUS: Approved subject to a S111 and/or a S106 legal agreement.

USE: The Ringway Centre is to

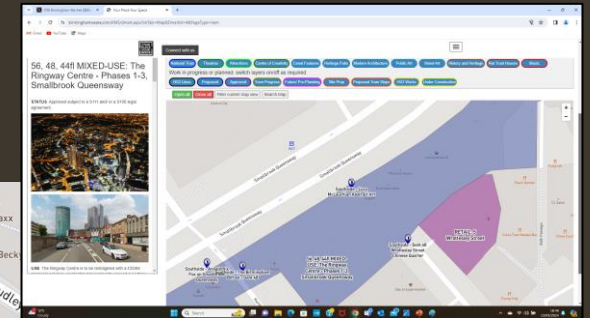
itsYourBuild - Birmingham @ItsYourBuild - Mar 14
 THE RINGWAY CENTRE.

A key milestone has been reached today with the signing of a S106 legal agreement between all parties.

As a result, the Ringway Centre has now been formally approved!

Phase 1 can now move forward towards an exciting new future.
 #Birmingham @YBS

You and 3 others
 20 21 105 17K



30fl Sherlock Yard, Sherlock Street, Birmingham, UK - Placemaking with Community



This is Sherlock Yard: a 551 build-to-rent development that expands the city core, revitalising the area.

Close feature

SHERLOCK YARD

Sherlock Street, Bishop Street, and Hurst Street
Southside, Birmingham, B5
View the site map [HERE](#).



PROJECT TEAM

- Developer: Watkin Jones Group
- Architect(s): Howells, Stride Treglown, TPM Landscape
- Project Manager/ QS: Watkin Jones Group
- Principal Designer: Projex Building Solutions (Ridge)
- Structural & Civil Engineer: Apex
- M&E, BREAM: CDP
- Acoustics: PDA
- Frame: Stephenson Group
- Fire Engineer: Jenson Hughes
- Managed & Operated: Get Living
- Planning Consultant: Turley
- Planning Application Number: 2020/09624/PA
- Targeted Completion: April 2025

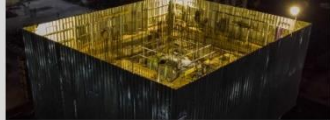


Sherlock Yard. Images from Howells

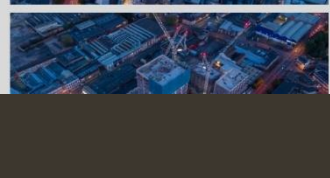
SHERLOCK YARD PROGRESS:

May 2022 -

With the site now cleared, two piling rigs are now on site, signaling an early construction start.

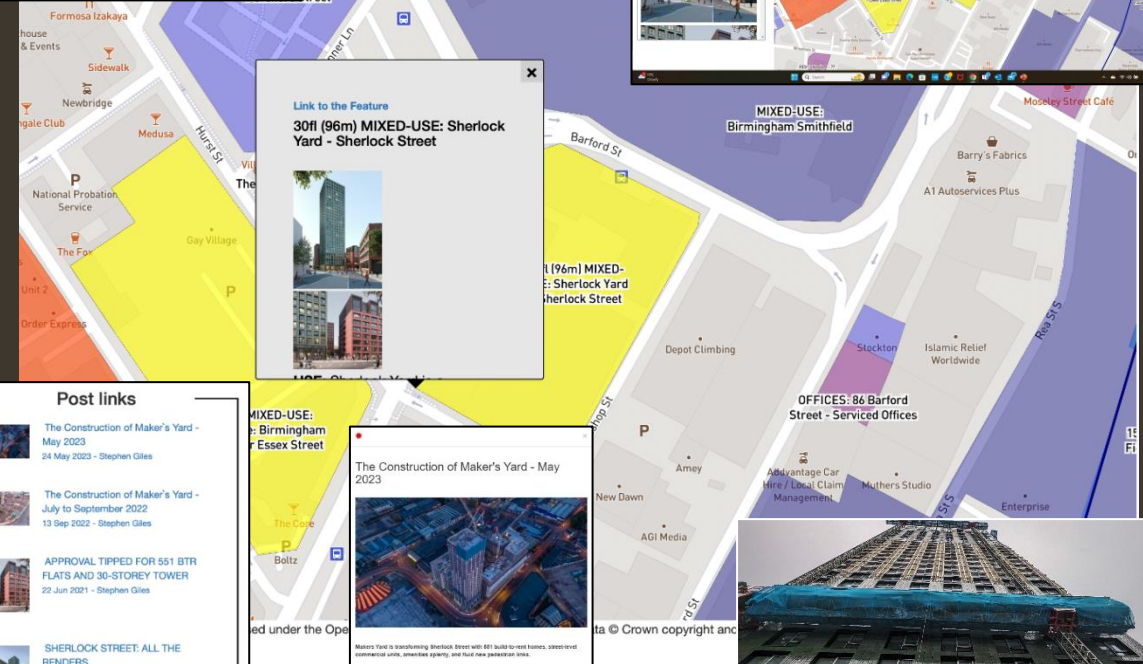
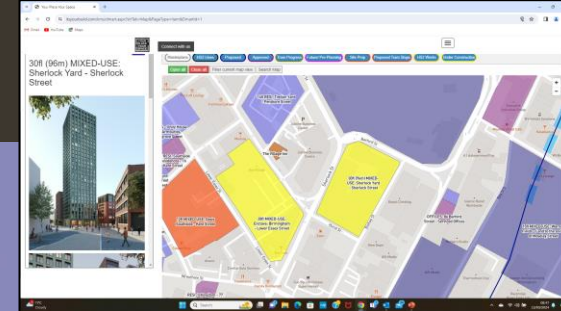


May 2023 -



SHERLOCK YARD (Southside, Birmingham) A Your Place Your Space featured development

Content is regularly updated
Feature can be viewed via many links



Link to the Feature
30fl (96m) MIXED-USE: Sherlock Yard - Sherlock Street

Post links

- The Construction of Maker's Yard - May 2023
24 May 2023 - Stephen Giles
- The Construction of Maker's Yard - July to September 2022
13 Sep 2022 - Stephen Giles
- APPROVAL TIPPED FOR 551 BTR FLATS AND 30-STOREY TOWER
22 Jun 2021 - Stephen Giles
- SHERLOCK STREET: ALL THE RENDERS
16 Dec 2020 - Stephen Giles

[View all posts](#)

The Construction of Maker's Yard - May 2023



30fl South Central, Essex Street, Birmingham, UK - Placemaking with Community



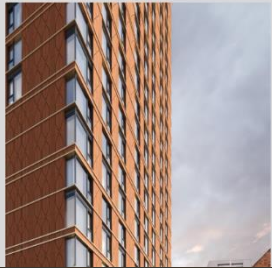
South Central, at 30 storeys (98m), is Birmingham's first terracotta tower.

SOUTH CENTRAL

Essex Street and Bristol Street
Birmingham, B5
View the site map [HERE](#).

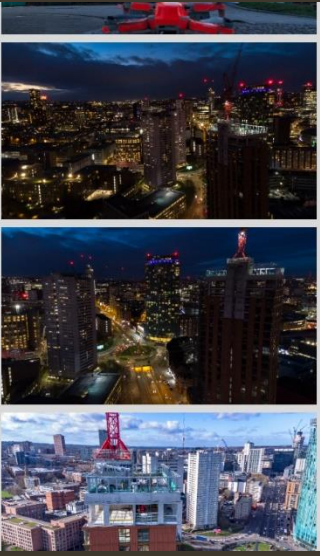
PROJECT TEAM:

- Developer: Essex Street Properties Ltd (Regal Property Group)
- Architect: Gianico Nichola Architects
- Project Manager, Quantity Surveyor, Employer's Agent: Quantium
- MEP Consultant: August Consulting
- Facade: Rinaldi (Struzal UK), Rileway Faving
- Contractor(s): Yates Construction, Kalfbey
- Marketing: Connors
- Planning Application Number: 2021/11/0738/P/A
- Targeted Completion: December 2024



SOUTH CENTRAL PROGRESS:

February 2024 -



December -



July -



SOUTH CENTRAL (Southside, Birmingham)

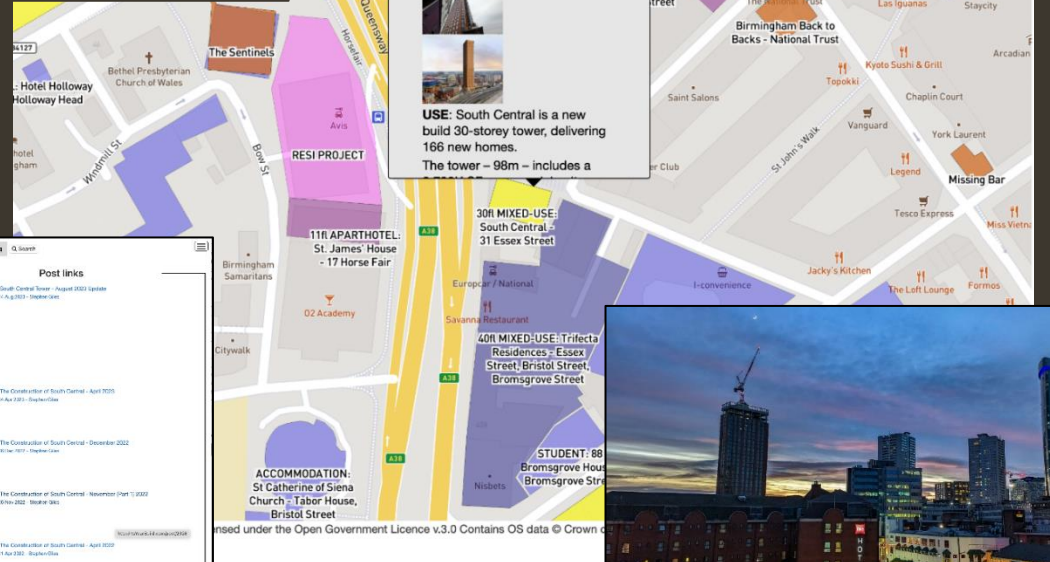
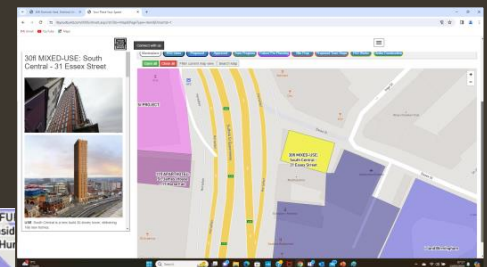
A Your Place Your Space featured development

Content is regularly updated
Feature can be viewed via many links



[Link to the Feature](#)
30fl MIXED-USE: South Central - 31 Essex Street

USE: South Central is a new build 30-storey tower, delivering 166 new homes. The tower – 98m – includes a




Connect with us

Post links

- South Central Tower - August 2023 Update
- The Distribution of South Central - April 2023
- The Contribution of South Central - December 2022
- The Contributor of South Central - November 2021
- The Contributor of South Central - April 2021




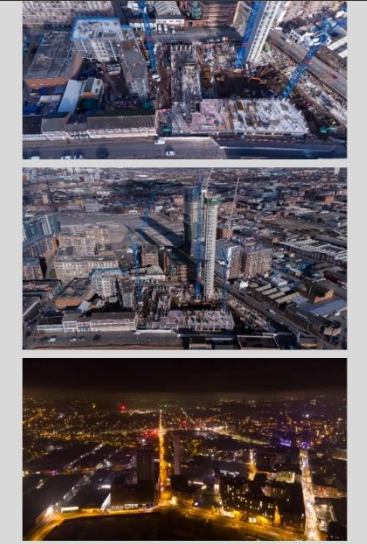
28fl Enclave: Birmingham, Lower Essex Street, Birmingham, UK - Placemaking with Community



Enclave: Birmingham is a modern 628 built-to-rent community coming soon to Southside.

ENCLAVE: BIRMINGHAM
Lower Essex Street, Hard Street, and Shaftesbury Street

PROJECT TEAM
 Client: Lower Essex Street Ltd
 Architects: Claridge Architects, Conatrophe & Wight
 Funding: Blackrock Alternatives
 Operator: Outpost Management's Enclave brand
 Cost Management, Employer's Agent: Faithful+Gould
 Civil & Structural Engineer: Simpson TWS
 M&E Engineer: CH2M
 Acoustics: Hoare Lee
 Structural, Civils, Energy & Lighting: Mott MacDonald
 Principal Contractor: Galliard Construction/Kieran Construction/Cashin
 Planning Consultant: Lambert Smith Hampton
 Planning Application Number: 2021.05003.P/A





ENCLAVE (Southside, Birmingham)




A Your Place Your Space featured development

Content is regularly updated
Feature can be viewed via many links

ENCLAVE: BIRMINGHAM
Lower Essex Street, Hard Street, and Shaftesbury Street
Southside, Birmingham
View the site map [HERE](#)




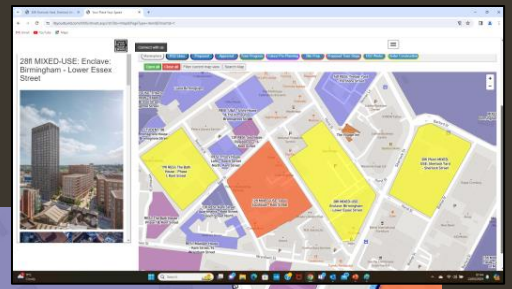
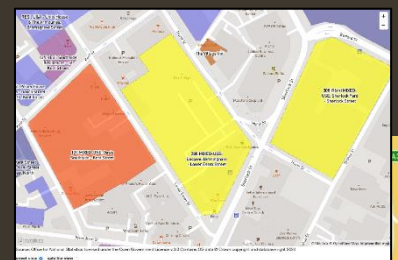
ENCLAVE: BIRMINGHAM:
February 2024 -

ENCLAVE: BIRMINGHAM

Enclave: Birmingham is a new 628 built-to-rent community coming to Southside. Forward funded and acquired by Blackrock Alternatives & Outpost Management, who will open their third business district offices here, the development will be spread across three buildings of up to, 12.28 stories (87.35m).

Enclave will offer 628 one, 28fl two & 27 three bedroomed homes, with over 20K sq ft of market leading amenity & outdoor living commercial, including space for a purpose-built LGBT+ club.





Post links

- Enclave: Birmingham On The Rise - February 2024 Update
20 Feb 2024 - Stephen Giles
- Lower Essex Square Recommended for Approval
13 Jun 2022 - Stephen Giles


[View all posts](#)

Link to the Feature
 28fl MIXED-USE: Enclave: Birmingham - Lower Essex Street



USE: Enclave: Birmingham is a

Enclave: Birmingham On The Rise - February 2024 Update



All three phases at Enclave: Birmingham, on Lower Essex Street in Southside, are now well under construction and taking shape





A detailed street map of the Eastside area in Birmingham, UK. The map shows a network of streets including Aston St, Jennens Rd, Curzon St, and Dale End. Key landmarks such as Birmingham Children's Hospital, Aston University Day Hospital, Birmingham City University Central Campus, and various hotels and restaurants are labeled. A central semi-transparent grey box with rounded corners contains the word "Eastside" in large white font. The map also features a canal on the right side and several bus routes marked with B4114.

Eastside

One Eastside, Birmingham, UK - Placemaking with Community



One Eastside, a dual tower scheme, is to become the tallest built-to-rent (BTR) tower outside of the capital.

One Eastside

ONE EASTSIDE

Jarvis Road & James Watt Queensway
City Centre, Birmingham, B4 7PB
View the site map [HERE](#)



ONE EASTSIDE CONSTRUCTION PROGRESS

February 2024 -



May 2023 -

One Eastside is now rising out of the ground



ONE EASTSIDE (Eastside, Birmingham) A Your Place Your Space featured development

Content is regularly updated Feature can be viewed via many links

ONE EASTSIDE

One Eastside, a dual tower scheme, is to become the tallest built-to-rent (BTR) tower outside of the capital.

The vertical community will include a 51-story skyscraper (155.1m), complemented by a 10-story mixed-use building. One Eastside will accommodate a wide selection of 857 homes, in a mix of 385 one and 292 two beds (1-4 persons).

Residents will have a host of amenities to choose from including private landscaped gardens, a social club, a gym, a hot tub, rooftop terrace, a cinema space, a games room, and a 51st-floor sky lounge, set to become the region's highest.



December 2023 -

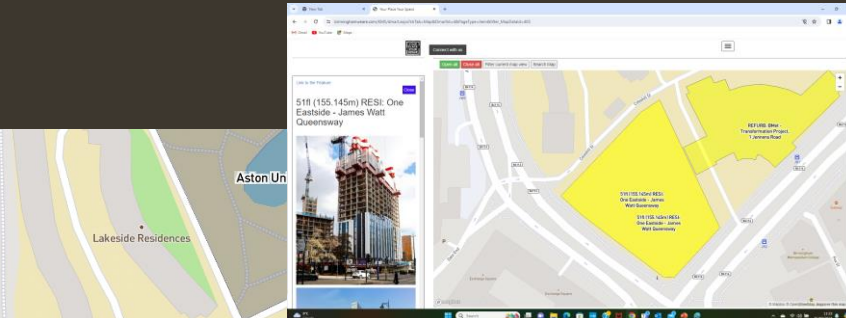


February 2023 -




PROJECT TEAM

(subject to change)
Partners: Court Collaboration, Gallagher Developments
Forward Funding: Parson Insurance Corporation (PIC)
Architect(s): Swadlow, Glancy Nicholls, Fira
Project Manager: Court Collaboration (CM/PC)
Civil & Structural Engineer: SCM
MEP: Clough Perry Wilkes, Design MEP
Building & MEP Clerk of Works: Bailey Garner LLP
Groundworks: McAliffa Civil Engineering
Contractor: Midgard (JRL Group); Subcontractors: JRL Group
Planning Consultant: Turley
Planning Application Number: 2019/04238/PA
Targeted Completion: 2026

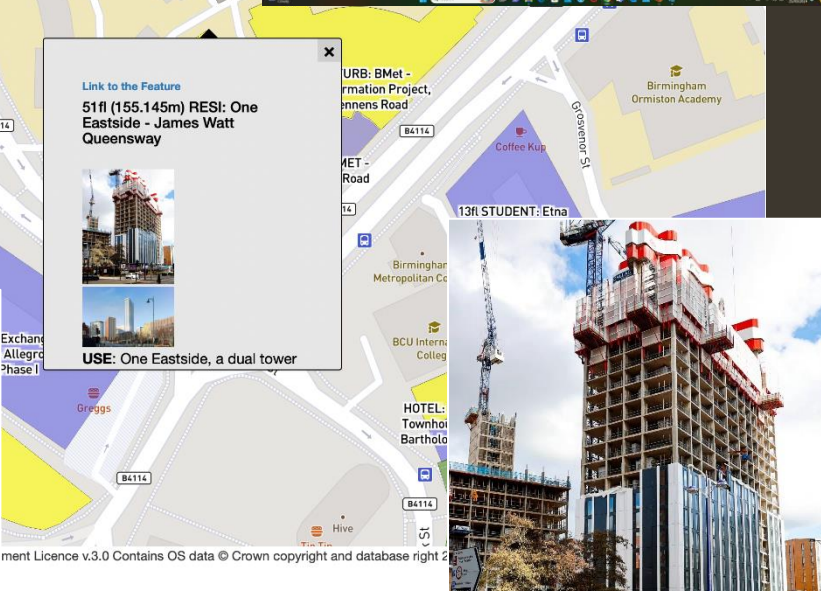


[Link to the Feature](#)

51fl (155.145m) RES: One Eastside - James Watt Queensway




USE: One Eastside, a dual tower





Features: Plans Community Media/Tools About Us

Glasswater Locks, Birmingham, UK - Placemaking with Community




Glasswater Locks is Birmingham's newest canal-side destination, transforming a site full of industrial heritage with 762 new homes.

Close features


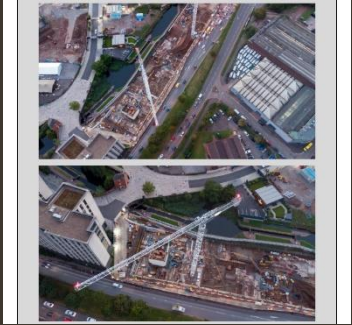

GLASSWATER LOCKS
Belmont Row, Birmingham
View the plan on a map

GLASSWATER LOCKS CONSTRUCTION:

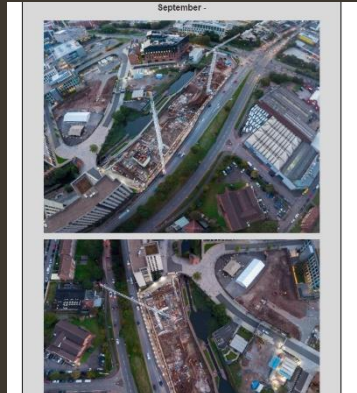
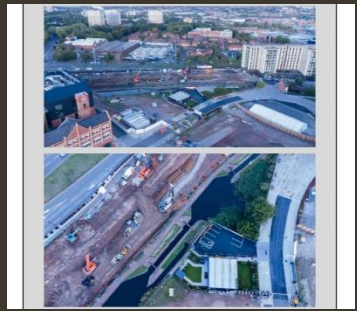
August 2022



September

PROJECT TEAM: (Subject to change)
Developer: St. Joseph Homes
Architect: Conrath & Wright, Howells, Manscho Wolskel
Civil & Structural Engineer: CCSC
MEPH: Briggs & Forrester
Masonry: Causton Group
Basement, Groundworks, Reinforced Concrete Frame: MFC Structures



GLASSWATER LOCKS

Glasswater Locks is Birmingham's newest canal-side destination, transforming a site full of industrial heritage with 762 new homes.

Featuring the first canal-side, the project team will deliver about 150,000 sq ft of 38 to 39 storeys (123.8m), offering an eclectic selection of 317 one, 300 two & 28 three-bedroom homes, catering to every lifestyle.

Complementing the built environment will be a market square and 150m of elevated shared pavilions carrying about 1000 restaurants, bars, and cafes (50K sq ft).

Residents will have exclusive access to a canal-side club with elevated gardens, barbers, a 24-hour concierge, bikeboxes, meeting and workspaces, a gymnasium, and a colour4U games and cinema room.

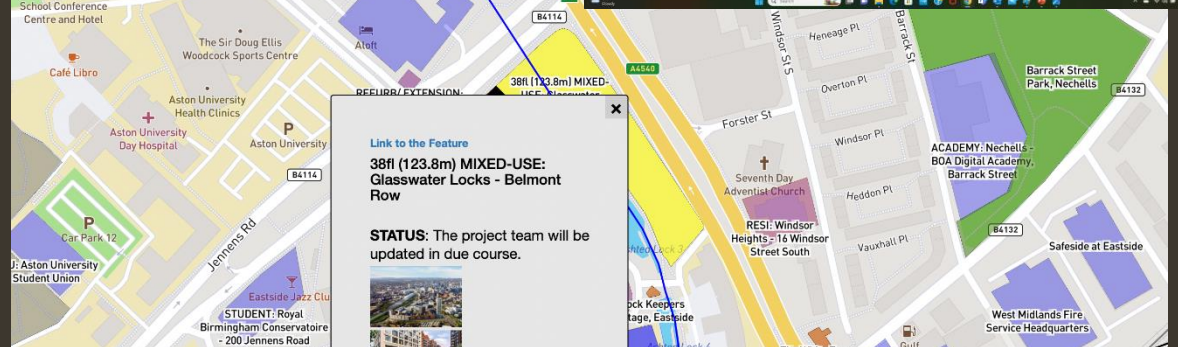
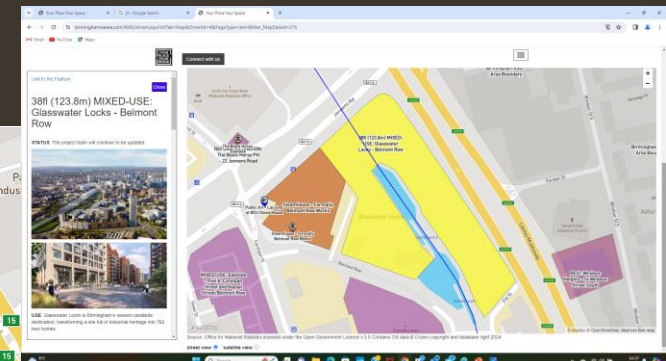
Construction is well underway with an initial 312 homes (78 in each) across four 8-story buildings (Avalon Street, Belmont Street, Cannon Wharf, and Curzon Wharf).



GLASSWATER LOCKS (Eastside, Birmingham)

A Your Place Your Space featured development

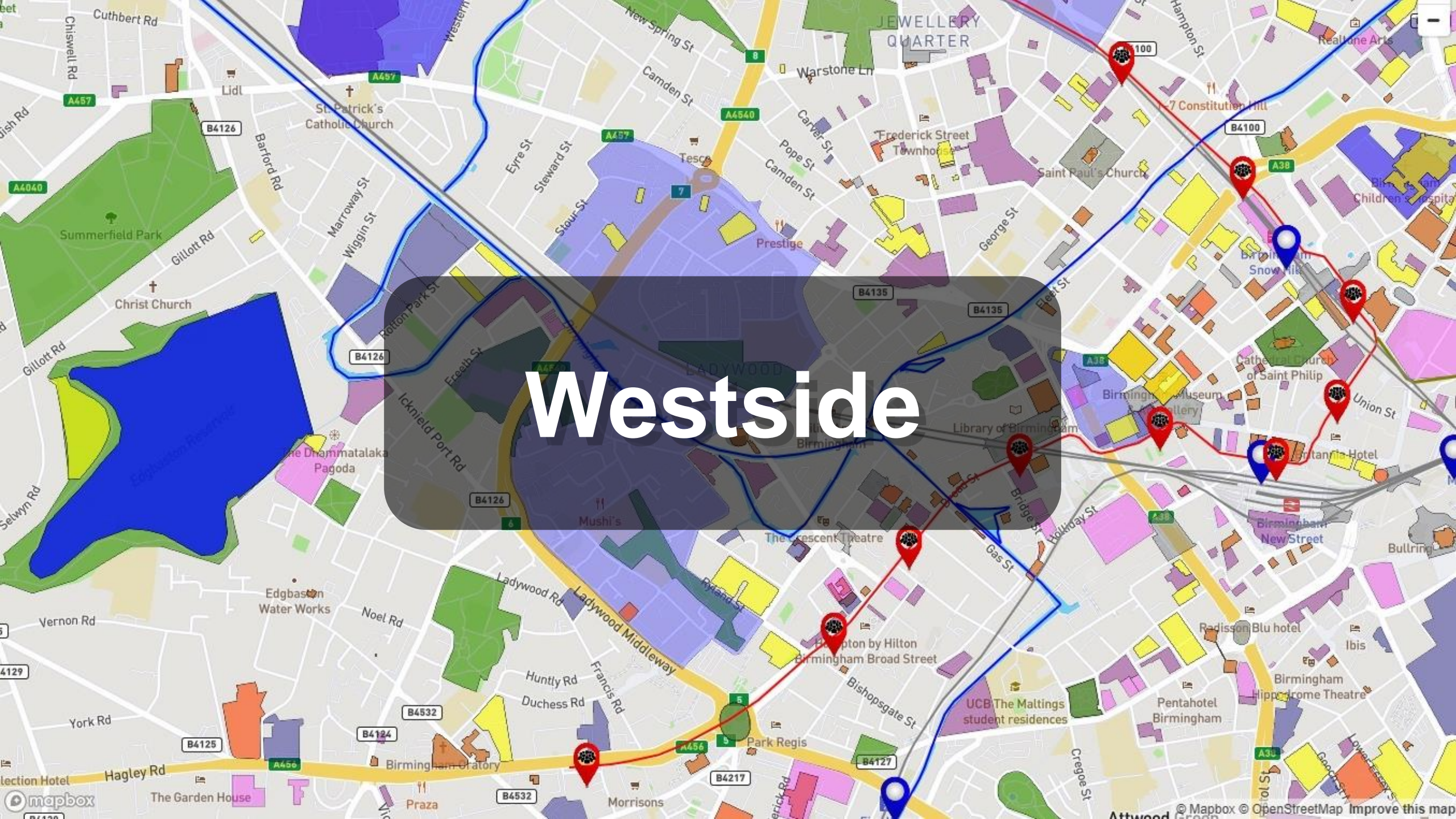
Content is regularly updated
Feature can be viewed via many links



licensed under the Open Government Licence v3.0 Contains OS data © Crown copyright




Westside



You are in: Featuring
 Features Posts Community Maps/Trails About us


Cortland Broad Street, The Square, Birmingham, Construction with Community



The Square is a two-phased project featuring Cortland Broad Street, a new 6-35-storey tower containing 440 rented apartments (BTR), and a three-star hotel.

[Close feature](#)

CORTLAND BROAD STREET (PHASE I)
 The Square, Broad Street, Birmingham
[View the site map HERE](#)



PROJECT TEAM:

- Partners: Cortland Build UK, Harrison Street
- Architects: Corstorphine & Wright, Weddies
- Principal Designer: Construction CDM
- Quantity Surveyor: WT Partnership
- Structural & Civil Engineer Services: Tier Consult/Vtec Group
- Groundworks, Drainage & Concrete Frame: Stephenson Group
- Principal Contractor: The RG Group
- Planning Consultant: Delta Planning
- Funding: Cortland, Harrison Street, AllianceDemston
- Marketing: Knight Frank
- Planning Application Number: 2020/0370/LPA
- Targeted Completion: March 2024




CORTLAND BROAD STREET, PHASE I @ 'THE SQUARE'.
 The Square is a two-phase landmark built-to-rent (BTR) and hotel development on Birmingham's Broad Street.

Phase 1 has delivered a 6-35-storey containing 440 one- and two-bedroom apartments (1-4 persons) for US BTR giant, Cortland and their joint venture partner, Harrison Street. The building will be known as 'Cortland Broad Street'.

Completing in March 2024, Cortland Broad Street includes more than 12,000 sq ft of amenities for the optimum rental experience. These include a large, landscaped courtyard with a 200m running track, a gym, a cinema room, co-working & lounge spaces, dining areas, a booting area, a roof terrace, and a tennis club at the tower's base.


CORTLAND BROAD STREET PROGRESS
 October 2021 - Demolition has been completed with construction imminent






Drone image from Stephen Giles.

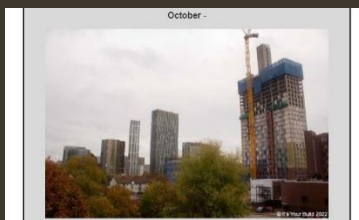
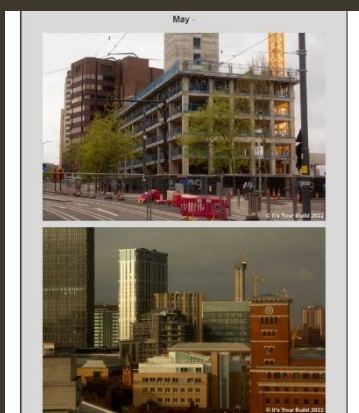
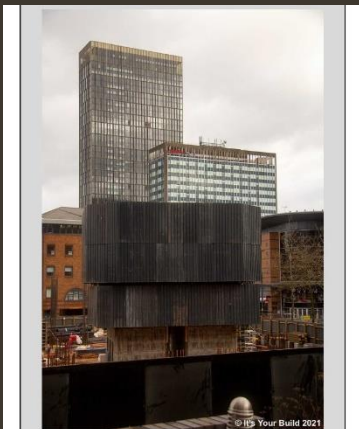
A piling rig is on-site, signalling that construction is now underway on the first phase. 440 built-to-rent (BTR) apartments will be delivered for Cortland UK, part of US BTR giant, Cortland Group, in partnership with Harrison Street.

Foundations complete, ready for the core rest.



The core is set!

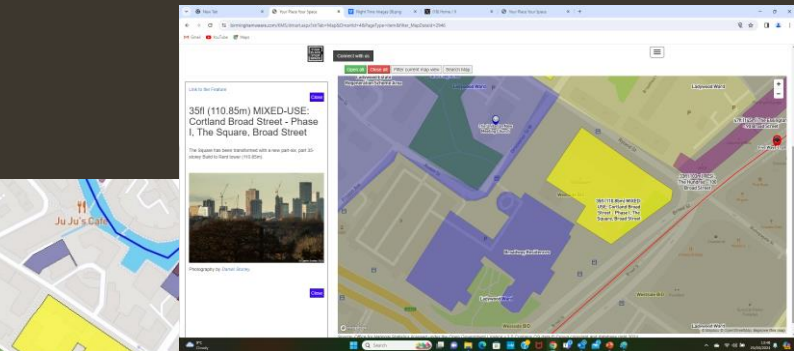






CORTLAND BROAD ST, THE SQUARE (Westside, Birmingham)


A Your Place Your Space featured development

Content is regularly updated
Feature can be viewed via many links

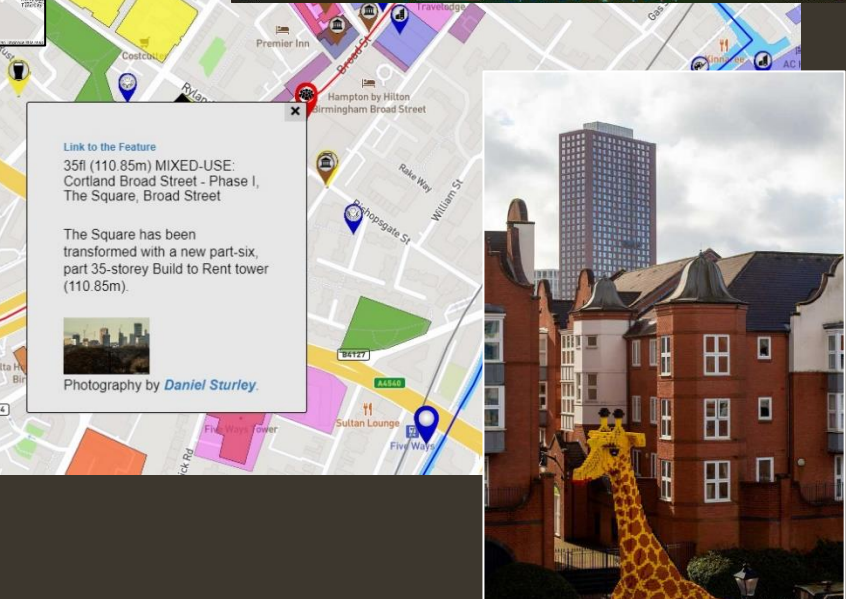


[Link to the Feature](#)
35fl (110.85m) MIXED-USE: Cortland Broad Street - Phase I, The Square, Broad Street

The Square has been transformed with a new part-six, part 35-storey Build to Rent tower (110.85m).



Photography by [Daniel Sturley](#)







**It's your build
digital package
looking for a new home**

Contact

Jonathan.Bostock@yourplaceyourspace.com

07432 637322